



The Official

# OREGON SECTION AEG NEWSLETTER

<http://www.aegoregon.org>

## September Meeting

Tuesday September 27<sup>th</sup>

Location: Old Market Pub

6959 SW Multnomah

Portland, OR

6:00 pm Social

7:00 pm Dinner

7:30 pm Presentation

Dinner: Pizza & Salad

\$20 Dinner (\$5 Students)

### Reservations:

[mwagner@cornforthconsultants.com](mailto:mwagner@cornforthconsultants.com)  
with "AEG Reservation" in  
the subject line or 971-222-  
2047 by 4pm Thur. Sept 22

There is a \$2 surcharge for  
those who do not reserve by  
the deadline.

### Upcoming Meetings:

Oct 18<sup>th</sup> TBA  
Nov 15<sup>th</sup> TBA  
Dec 13<sup>th</sup> Scott Burns  
Jan 17<sup>th</sup> ASCE/AEG Meeting  
Feb 21<sup>st</sup> TBA  
Mar 20<sup>th</sup> TBA  
Apr 17<sup>th</sup> TBA  
May 15<sup>th</sup> Student Poster Night



## The Geology of the Lower Owyhee River

Guest Speaker: Cynthia Hovind

The Owyhee Plateau is a unique geologic province that extends from the southeastern corner of Oregon into adjoining corners of Nevada and Idaho. The 346-mile-long Owyhee River was named after three Hawaiian trappers that were lost in the canyon in 1820. In 1984, the US Congress designated the lower 120-



mile stretch of the river as the Owyhee National Wild and Scenic River. The lower portion of the river flows from Rome, Oregon to Nyssa, Oregon, where it joins the Snake River.

From Rome to Lake Owyhee, the Owyhee River cuts through 17 million of years of basalts, rhyolite and tuffaceous lacustrine and alluvial deposits. The 15- to 17-million-year-old Owyhee Basalts and Rhyolites are the result of the back-arc spreading that occurred during the subduction of the Juan de Fuca Plate. The source of the lava is thought to be the Yellowstone Hotspot that feeds volcanic activity of Yellowstone today. The tuffaceous lacustrine deposits formed 2.5 to 6 million years old as large volumes of volcanic ash and debris spewed from local calderas and filled the Mio-Pliocene lakes that formed in the elongated valleys throughout the region. Around 2.5 million years ago, the Owyhee River started cutting its tortuous path from Elko Nevada to the Snake River, depositing volcanic alluvial gravels, sands and silts as the river pulsed through the area. Over the last 1.8 million years, several basalts flows have repaved the plateau and created the river's most recent path.



*“Keen observation is at  
least as necessary as  
penetrating analysis”*

*Karl Terzaghi*



## Bio: Cynthia L. Hovind, PE GE

Cynthia L. Hovind, PE GE, is the principal Geotechnical Engineer and owner of Terra Dolce Consultants, Inc. in Portland, Oregon. In 1977, Cynthia started studying geology at Santa Barbara City College and later transferred to the University of California, Santa Barbara, where she received her Bachelor of Arts in Geology in 1984. After finishing USCB, Cynthia moved to Alaska, where she worked for Anadrill Schlumberger on several exploratory drill rigs on the North Slope of Alaska. In 1987, Cynthia moved to Pullman, Washington to study for her Master of Science Degree in Geotechnical Engineering at Washington State University. In 1990, Cynthia moved to Portland where she worked for EMCON, Newton Consultants, and AMEC before starting Terra Dolce Consultants, Inc.

## Message from the Chair

Welcome back from the summer break. My name is Kevin Schleh, and I will be serving as the Chair of the Oregon AEG Section this year. The election results for the 2011-2012 Oregon AEG Board are complete. Please welcome Linda Mark as the incoming Secretary, Darren Beckstrand as the Treasurer, and Robin Johnston as the Chair Elect. Thanks to all of those who voted in this year's election. Additionally, after several years of serving as the newsletter editor, Bill Burns decided to step down and Scott Braunsten has filled the position. Thanks for all the years of serving the Oregon Section Bill. I would also like to thank Lisa Glonek for her past role as the Section Chair, and for her continued roll with AEGs newly formed Sustainability Technical Working Group. The Oregon Section Board has some current vacancies, and we will look to fill outgoing positions in the Spring. Please feel free to approach any Board member if you have an interest in serving the geological community – our section would not be what it is without the volunteers!

This month, AEG is having the annual meeting in Anchorage, Alaska. Space is still available, but the hotels have been filling up; this should be an exciting event, and you'll need to act quickly if you would like to attend. I hope to see some of you there.

We have decided to start this season's meeting off this September with a presentation by Cynthia Hovind on The Geology of the Lower Owyhee River. For over 30 years, Cynthia has travelled throughout the world seeking geologic and cultural adventure. Please join us at the Old Market Pub on Tuesday September 27<sup>th</sup> to hear about her presentation. We look forward to seeing you there.

Sincerely,

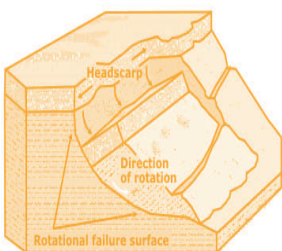
Kevin Schleh  
AEG Oregon Section Chair

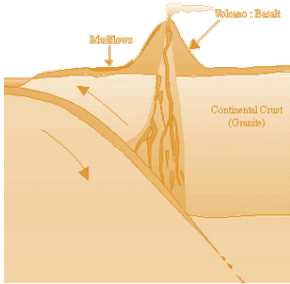
## OSBGE News Update

- New signature requirements for how registrants sign reports and other documents are in effect effective July 1, 2011. Registrants are now required to sign their name across the center of a registrant seal and write the expiration date beneath the seal.
- OSBGE is looking for volunteers to serve on the Board or help with other committee positions. This is a great opportunity to help the Board and serve the geologic profession.

A copy of the Summer 2011 Oregon Geologist Examiner is available at:

<http://www.oregon.gov/OSBGE/pdfs/OSBGESummer2011Newsletter.pdf>





## EXPERIENCED DRILLERS, INNOVATIVE TECHNOLOGY

Global Drilling Services



### OVER 120 YEARS GLOBAL DRILLING EXPERIENCE

Boart Longyear maximizes the return on your budget through knowledgeable crews, advanced equipment and experienced management teams.

We excel in various drilling methods including:

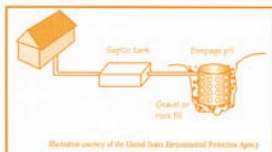
- Sonic Drilling
- Hollow Stem Auger Drilling
- Well Rehabilitation
- Cable Tool RC
- Mud and Air Rotary
- Bucket Auger Drilling
- Rock Coring

We also specialize in:

- Environmental and Geotechnical Investigations
- Construction De-watering Wells
- Large Diameter Water Wells
- Construction Borings
- Aquifer Tests

Boart Longyear  
Environmental and Infrastructure  
11277 SW Clay St., Suite A  
Sherwood, OR 97140  
Tel: (503) 572-3090  
[www.BoartLongyear.com](http://www.BoartLongyear.com) • ASX: BLY

 **BOART LONGYEAR**



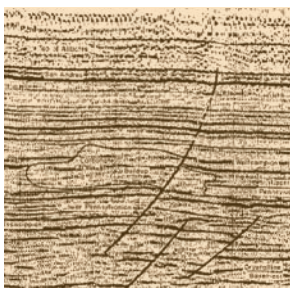
Schematic of a Seepage Pit (Dry Well)

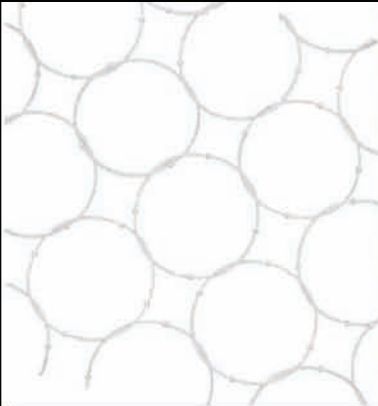
# Western States Soil Conservation, Inc.

*There is no limit to the depths we will go*



Geotechnical and Environmental Drilling Services  
PO BOX 428 ▪ 3100 Schmidt Lane ▪ Hubbard, Oregon 97032  
(503) 982-1777 Office ▪ (503) 982-8220 Fax  
[westernstates@centurytel.net](mailto:westernstates@centurytel.net) ▪ [www.westernstatesoil.com](http://www.westernstatesoil.com)





## Natural Hazard Solutions – Accomplish your priorities for hazard protection.

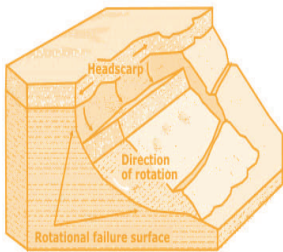
Systems engineered for maximum protection are not just products, but tested and proven solutions for:

- Debris flow
- Landslide
- Rockfall
- Slope instabilities
- Avalanche

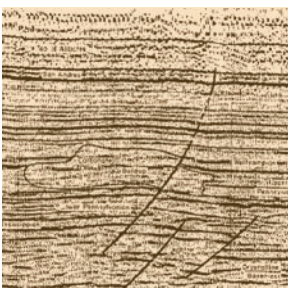
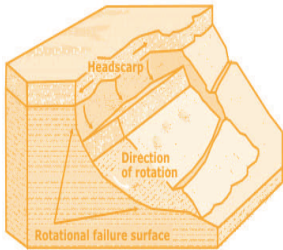
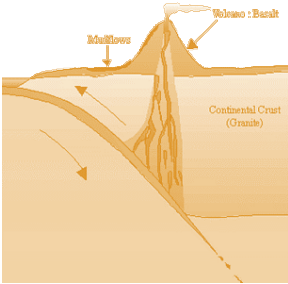
Matching your cost-saving priorities for:

- Strength and durability
- Easy installation
- Simple maintenance

See more [www.geobrugg.com](http://www.geobrugg.com)



**Geobrugg North America, LLC**  
Tim Shevlin, PG  
Northwestern USA & Western Canada  
Phone: (503) 423-7258  
Fax: (503) 391-6954  
[tim.shevlin@geobrugg.com](mailto:tim.shevlin@geobrugg.com)  
[www.geobrugg.com](http://www.geobrugg.com)



# MAJOR

Drilling Environmental, LLC

---

**Partners On the Ground**

- Mud Rotary & Hard Rock Coring
- Rubber Track Equipment
- Hollow Stem Auger
- Direct Push (Geoprobe)
- Borehole Clearance (Vac-U-Dig)
- Roto-Sonic Drilling

Portland (503) 925-1133  
 Salt Lake City (801) 974-0645  
 Little Falls (320) 632-3010  
 Huntsville (256) 852-7000  
[www.majordrilling.com](http://www.majordrilling.com)

*The MAJOR Advantage™ - Senior drilling talent and management with all new equipment*





Geohazard Studies  
 Dewatering  
 Tunnels / Shafts  
 Landslide Mitigation  
 Rock Slope Design  
 Forensic Failure Studies  
 Deep Foundations  
 Ground Improvement  
 Seismic Design  
 Retaining Walls  
 Revetments  
 Waterfront Structures  
 Trenchless Technology  
 Value Engineering


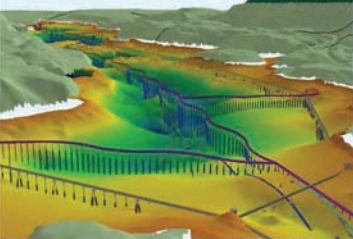

---

Excellence. Innovation.  
 Service. Value.  
**We help our clients  
 achieve their goals.**

---


Washington California  
 Alaska Colorado  
 Missouri Minnesota  
 Florida  
 AND  
**Celebrating 50 Years  
 in Oregon**

3990 Collins Way  
 Lake Oswego, OR  
**(503) 210-4750**  
[shannonwilson.com](http://shannonwilson.com)






Lake Oswego  
 Interceptor  
 Sewer  
 Replacement

2007-2011  
 Owner: City of Lake Oswego



**SHANNON & WILSON, INC.**  
 GEOTECHNICAL AND ENVIRONMENTAL CONSULTANTS




## CASCADE DRILLING INC.

FULL SERVICE DRILLING

ENVIRONMENTAL GEOTECHNICAL COMMERCIAL

- Air / Mud Rotary & Rock Coring
- Limited Access and Track Equipment
- Dewatering Wells
- Hollow Stem Auger
- Sonic Drilling
- Direct Push (Probe)
- In-Situ Injection
- Vacuum / Air Knife Services



**CASCADE DRILLING, INC - PORTLAND**

13600 SE AMBLER RD  
 CLACKAMAS, OR 97015  
 Office: (503) 775-4118  
 Fax: (503) 775-4099  
[www.cascadedrilling.com](http://www.cascadedrilling.com)

SEATTLE  
(425)485-8908

PORTLAND  
(503)775-4118

SACRAMENTO  
(916) 638-1169

LOS ANGELES  
(562) 929-8176

*“Keen observation is at least as necessary as penetrating analysis”*

*Karl Terzaghi*

## Thanks For Supporting

Ash Creek Associates  
AMEC Earth and Environmental, Inc.  
Columbia Geotechnical  
Cornforth Consultants  
Geocon NW  
Kuper Consulting  
Oregon Department of Geology and Mineral Industries  
Parametrix  
PBS Engineering + Environmental  
Portland State University



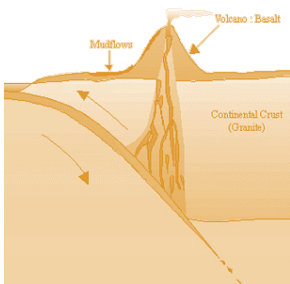
PSU AEG student chapter officers for Fall 2011 - Spring 2012: Matt Gibson (treasurer), Tom Denney (president), Emily Jenkins (vice-president), Kathy Breen (brown-bag coordinator). Not present for photo: Ellie Brown (secretary).



**PBS** Engineering + Environmental

Geo-Environmental	Environmental Engineering
Health & Safety	Civil Engineering
Natural Resources	Geotechnical Engineering

4412 SW Corbett Avenue, Portland, Oregon 97239  
503.248.1939 [www.pbsenv.com](http://www.pbsenv.com)



**GeoPotential** ENVIRONMENTAL & EXPLORATION GEOPHYSICS  
22323 East Wild Fern Lane, Brightwood, Oregon 97011 • PH (503) 622-0154 • FAX (503) 622-0526  
WEB <http://www.geopotential.biz/> E-MAIL [GeoPotential@geopotential.biz](mailto:GeoPotential@geopotential.biz)

### SUBSURFACE MAPPING SURVEYS

**GROUND PENETRATING RADAR SURVEYS**  
**MAGNETOMETER & ELECTROMAGNETIC SURVEYS**  
**GRAVITY SURVEYS**  
**RESISTIVITY SURVEYS**

**MOBILE LABORATORY**

**PROJECTS: GEOLOGIC ENGINEERING, ENVIRONMENTAL OIL & MINERAL EXPLORATION, ARCHAEOLOGICAL**

**LOCATE: VOIDS, UTILITIES STORAGE & SEPTIC TANKS FOUNDATIONS, DRAIN FIELDS WATER WELLS MONITORING WELLS**

104 electrode spacing 200 m.

## Section Officers & Committee Chairs



Chair :  
Kevin Schleh  
Geocon NW  
Kevin@GeoConNW.com



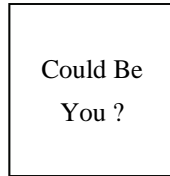
Program Co-Chair:  
Michael Marshall  
Parametrix  
mmarshall@parametrix.com



Legislature Chair:  
Adam Reese  
Ash Creek Associates  
AREese@ashcreekassociates.com



Chair Elect:  
Robin Johnston  
Amec Earth & Environmental  
Robin.johnston@amec.com



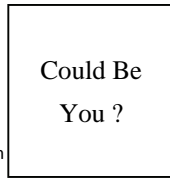
Program Co-Chair:  
Vacant



Continuing Education Liaison:  
Andrew Harvey  
drewh1031@earthlink.net



Treasurer:  
Darren Beckstrand  
Cornforth Consultants  
dbeckstrand@cornforthconsultants.com



Field-Trip Chair:  
Vacant



Newsletter Editor:  
Scott Braunsten  
PBS Engineering + Environmental  
scott.braunsten@pbsenv.com



Secretary:  
Linda Mark  
Vigil-Agrimis  
lmark@vigil-agrimis.com



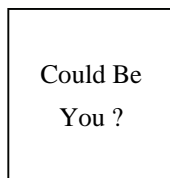
Membership Chair:  
Ruth Wilmoth  
Columbia Geotechnical, Inc.  
ruthwilmoth@comcast.net



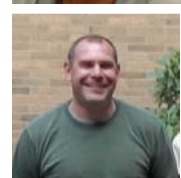
Webpage Editor:  
Keith Olson  
kvo@pdx.edu



Past Chair:  
Lisa Glonek  
lglonek@hotmail.com



History Chair:  
Vacant



PSU Student Chapter President:  
Tom Denney  
potsie181@yahoo.com

The Oregon Section is also on the web at <http://www.aegoregon.org>  
National AEG webpage: <http://aegweb.org>

## The Oregon Section Newsletter

OREGON SECTION AEG NEWSLETTER is published monthly from September through May. Subscriptions are for members of AEG affiliated with the Oregon Section or other Sections, and other interested people who have requested and paid a local subscription fee of \$10.00. E-mail subscriptions are free. News items are invited and should be sent to: Scott Braunsten, OR Section AEG Newsletter Editor, PBS Engineering + Environmental, 4412 SW Corbett Avenue, Portland, OR 97239, e-mail: [scott.braunsten@pbsenv.com](mailto:scott.braunsten@pbsenv.com), phone (503) 417-7737. Electronic media is preferred. Deadline for submittal is the 20th of the month. Advertising: business card \$100/yr; ¼ page \$200/yr; ½ page \$350/yr. Please notify Scott if you have a change to your email or mailing address.

The Association of Engineering Geologists (AEG) contributes to its members' professional success and the public welfare by providing leadership, advocacy, and applied research in environmental and engineering geology. AEG's values are based on the belief that its members have a responsibility to assume stewardship over their fields of expertise. AEG is the acknowledged international leader in environmental and engineering geology, and is greatly respected for its stewardship of the profession.

