



The Official

# OREGON SECTION AEG NEWSLETTER

<http://www.aegoregon.org>

## October Meeting Details

Tuesday October 18<sup>th</sup>

Location: Old Market Pub

6959 SW Multnomah

Portland, OR

6:00 pm Social

7:00 pm Dinner

7:30 pm Presentation

Dinner: Pizza & Salad

\$20 Dinner (\$5 Students)

### Reservations:

[mwegner@cornforthconsultants.com](mailto:mwegner@cornforthconsultants.com) with "AEG Reservation" in the subject line or 971-222-2047 by 4pm Thur. Oct 13

There is a \$2 surcharge for those who do not reserve by the deadline.

### Upcoming Meetings:

Nov 15<sup>th</sup> TBA  
Dec 13<sup>th</sup> Scott Burns  
Jan 17<sup>th</sup> ASCE/AEG Meeting  
Feb 21<sup>st</sup> Bill Burns  
Mar 20<sup>th</sup> Tom Pierson  
Apr 17<sup>th</sup> Jennifer Bauer  
May 15<sup>th</sup> Student Poster Night



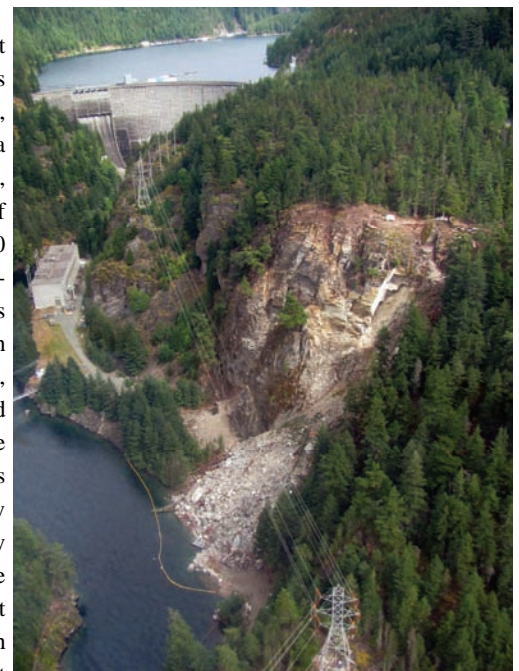
## Ross Powerhouse Rock Slide Emergency, Diablo Lake, Whatcom County, Washington

Guest Speaker: Benjamin George

### NOTE:

Multnomah to I-5 ramp is closed

Seattle City Light (SCL) operates the Skagit Power Project located in the North Cascades National Park (NCNP) near Newhalem, Washington. The project facilities include a series of three dams on the Skagit River: Gorge Dam, Diablo Dam and Ross Dam that provide 17 percent of Seattle's electrical energy. On the night of March 14, 2010 approximately 16,000 cubic yards of rock failed from a 400-foot tall slope about 1,500 feet downstream of the Ross Powerhouse. The event destroyed an 80-ton and a 100-ton barge landing along with two boat docks utilized by SCL, NCNP, Ross Lake Resort and the general public; and buried an access road between the powerhouse and the top of the dam. This road provides the only access between Ross Powerhouse and the dam for daily operation, emergency equipment and supplies. Access to the Ross facility is only possible by boat and barge across Diablo Lake, so loss of the landings posed a serious operational issue. The failure left the slope in a significantly unstable configuration with several very large overhanging blocks in the upper 150 feet of the scarp and blocks up to 25 feet across scattered throughout the debris pile and in Diablo Lake.



Landslide Technology, a Division of Cornforth Consultants, was asked to evaluate slope stability and provide long-term slope stabilization options. Selected mitigation measures include: extensive hand and mechanical scaling, rock bolting, and reshaping the scarp area using blast techniques. Bid quantities, final design plans and special provisions were developed in cooperation with SCL. A construction contract was awarded on May 11, 2010 and work is expected to continue at least through next year.



Due to the required rope access and the complexity of the project, Landslide Technology was retained to provide on-site technical support to oversee construction and to act as the owner's representative. Landslide Technology is also contracted to support design and construction of future phases of work, which will include a new ferry landing downstream of the slide, design and construction of a new roadway across the toe of the slide debris, and replacement of the barge/dock facilities destroyed by the slide.

*“Keen observation is at least as necessary as penetrating analysis”*

*Karl Terzaghi*

## Bio: Benjamin A. George, PE, PG

Ben is a Project Engineer at Cornforth Consultants, Inc., with over seven years of engineering geology and geotechnical experience with an emphasis on geologic hazards. This experience includes mitigating major rockfall and landslide hazards, seismic studies, geologic site reconnaissance, geotechnical and groundwater investigations, soil and rock material sources, mine tailing management, and construction observation. He received his BS and MS degrees in Geology and Geological Engineering from the Colorado School of Mines in Golden, Colorado. Mr. George is a Professional Engineer and a Registered/Professional Geologist.



## Message from the Chair

The meeting season has officially started, and I would like to thank Cinthia Hovind for her presentation on The Geology of the Lower Owyhee River. For the October meeting, Ben George of Cornforth Consultants will be presenting on rockfall mitigation.

This year's annual meeting is being lauded as an overwhelming success, with over 400 attendees. The next annual meeting will take place between September 15 and 23, 2012, in Salt Lake City, Utah. The theme of this meeting is *“Ascending to Greater Heights – Elevating Our Profession”*, and several field trips, short courses, technical sessions, etc. are being planned. I encourage attendance by all who can make this event, as the technical sessions and symposia can offer perspective on your own practice and it is a great forum to network with geologic professionals from across the country.

During the Board of Directors meeting, the issue of defining a “geoprofessional” was discussed as a current issue. AEG is collaborating with the Geo-Institute of ASCE to develop and refine this definition, as well as Bodies of Knowledge. The intent of this effort is to develop guidelines for education and training and to identify practice areas. While this is generally beneficial for the long term development of our industry, I also think it is critical that defining our field of work is done appropriately. As many recall, several issues were encountered with a similar effort (JTFAP). Based on the experiences of many in Oregon, I think members in our section are well suited to volunteer with crafting this type of document. If interested, please email your contact information to me at [kevin@geoconnw.com](mailto:kevin@geoconnw.com).

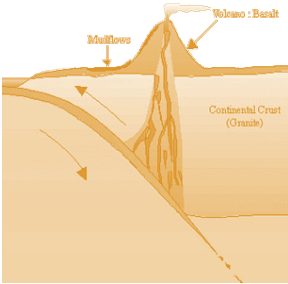
I look forward to seeing you at this month's meeting.

Sincerely,

Kevin Schleh, R.G., C.E.G.

AEG Oregon Section Chair





## EXPERIENCED DRILLERS, INNOVATIVE TECHNOLOGY

Global Drilling Services



### OVER 120 YEARS GLOBAL DRILLING EXPERIENCE

Boart Longyear maximizes the return on your budget through knowledgeable crews, advanced equipment and experienced management teams.

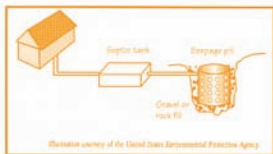
We excel in various drilling methods including:

- Sonic Drilling
- Hollow Stem Auger Drilling
- Well Rehabilitation
- Cable Tool RC
- Mud and Air Rotary
- Bucket Auger Drilling
- Rock Coring

We also specialize in:

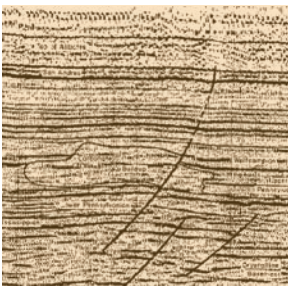
- Environmental and Geotechnical Investigations
- Construction De-watering Wells
- Large Diameter Water Wells
- Construction Borings
- Aquifer Tests

Boart Longyear  
Environmental and Infrastructure  
11277 SW Clay St., Suite A  
Sherwood, OR 97140  
Tel: (503) 572-3090  
[www.BoartLongyear.com](http://www.BoartLongyear.com) • ASX: BLY

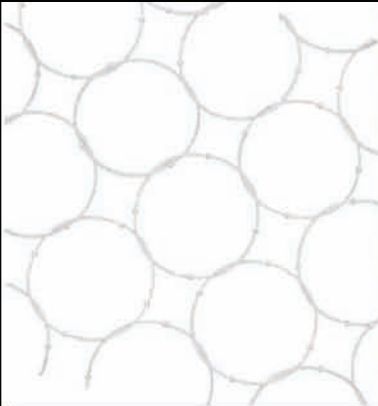
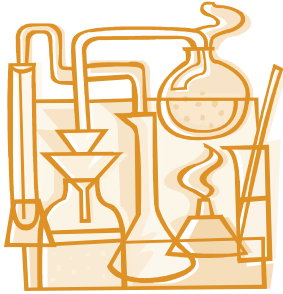


# Western States Soil Conservation, Inc.

*There is no limit to the depths we will go*



Geotechnical and Environmental Drilling Services  
PO BOX 428 ▪ 3100 Schmidt Lane ▪ Hubbard, Oregon 97032  
(503) 982-1777 Office ▪ (503) 982-8220 Fax  
[westernstates@centurytel.net](mailto:westernstates@centurytel.net) ▪ [www.westernstatesoil.com](http://www.westernstatesoil.com)



## Natural Hazard Solutions – Accomplish your priorities for hazard protection.

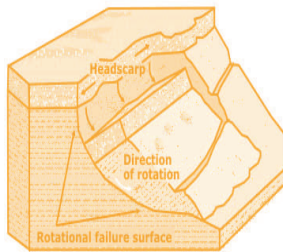
Systems engineered for maximum protection are not just products, but tested and proven solutions for:

- Debris flow
- Landslide
- Rockfall
- Slope instabilities
- Avalanche

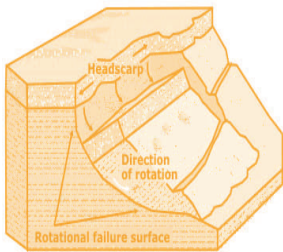
Matching your cost-saving priorities for:

- Strength and durability
- Easy installation
- Simple maintenance

See more [www.geobrugg.com](http://www.geobrugg.com)



**Geobrugg North America, LLC**  
Tim Shevlin, PG  
Northwestern USA & Western Canada  
Phone: (503) 423-7258  
Fax: (503) 391-6954  
[tim.shevlin@geobrugg.com](mailto:tim.shevlin@geobrugg.com)  
[www.geobrugg.com](http://www.geobrugg.com)



# CASCADE DRILLING INC.

## FULL SERVICE DRILLING

ENVIRONMENTAL GEOTECHNICAL COMMERCIAL

- Air / Mud Rotary & Rock Coring
- Limited Access and Track Equipment
- Dewatering Wells
- Hollow Stem Auger
- Sonic Drilling
- Direct Push (Probe)
- In-Situ Injection
- Vacuum / Air Knife Services



### CASCADE DRILLING, INC - PORTLAND

13600 SE AMBLER RD  
CLACKAMAS, OR 97015

Office: (503) 775-4118

Fax: (503) 775-4099

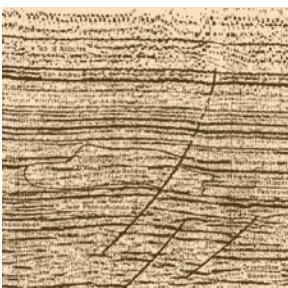
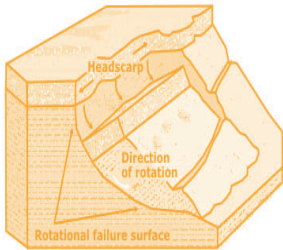
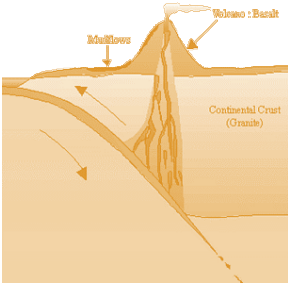
[www.cascadedrilling.com](http://www.cascadedrilling.com)

**SEATTLE**  
(425)485-8908

**PORTLAND**  
(503)775-4118

**SACRAMENTO**  
(916) 638-1169

**LOS ANGELES**  
(562) 929-8176



# MAJOR

Drilling Environmental, LLC

**Partners On the Ground**


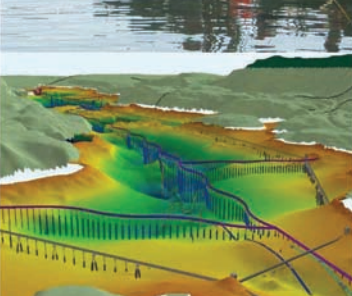

- Mud Rotary & Hard Rock Coring
- Rubber Track Equipment
- Hollow Stem Auger
- Direct Push (Geoprobe)
- Borehole Clearance (Vac-U-Dig)
- Roto-Sonic Drilling

Portland (503) 925-1133  
 Salt Lake City (801) 974-0645  
 Little Falls (320) 632-3010  
 Huntsville (256) 852-7000  
[www.majordrilling.com](http://www.majordrilling.com)

*The MAJOR Advantage™ - Senior drilling talent and management with all new equipment*





2007-2011  
Owner: City of Lake Oswego

Geohazard Studies  
 Dewatering  
 Tunnels / Shafts  
 Landslide Mitigation  
 Rock Slope Design  
 Forensic Failure Studies  
 Deep Foundations  
 Ground Improvement  
 Seismic Design  
 Retaining Walls  
 Revetments  
 Waterfront Structures  
 Trenchless Technology  
 Value Engineering

Excellence. Innovation.  
Service. Value.  
We help our clients  
achieve their goals.

Washington California  
Alaska Colorado  
Missouri Minnesota  
Florida  
AND  
Celebrating 50 Years  
in Oregon


3990 Collins Way  
Lake Oswego, OR  
(503) 210-4750  
[shannonwilson.com](http://shannonwilson.com)

**GeoPotential** ENVIRONMENTAL & EXPLORATION GEOPHYSICS

22323 East Wild Fern Lane, Brightwood, Oregon 97011  
 PH(503) 622-0154 FAX (503) 622-0526

WEB <http://www.geopotential.biz/>  
 E-MAIL [GeoPotential@geopotential.biz](mailto:GeoPotential@geopotential.biz)

SUBSURFACE MAPPING SURVEYS



MOBILE  
LABORATORY

GROUND PENETRATING  
RADAR SURVEYS

MAGNETOMETER &  
ELECTROMAGNETIC  
SURVEYS

GRAVITY  
SURVEYS

RESISTIVITY  
SURVEYS

*“Keen observation is at least as necessary as penetrating analysis”*

*Karl Terzaghi*

## Oregon Department of Environmental Quality News Update

On August 25, 2011, the Environmental Quality Commission approved the repeal of the UST Soil Matrix Licensing Rules (Chapter 340, Division 162.) The repeal became effective on September 1, 2011.

More information regarding the repeal may be found at:

<http://www.oregondeq.org/lq/tanks/ust/repealsoilmatrix.htm>

## Congratulations PSU

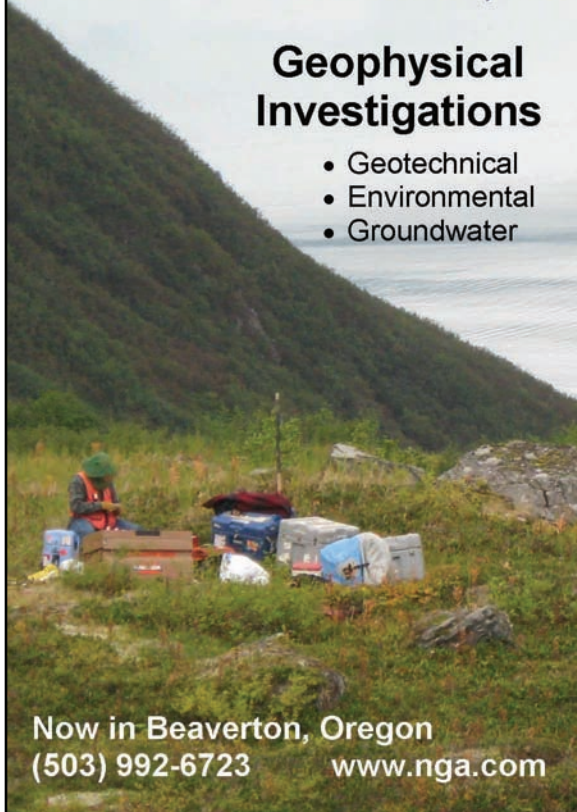
PSU Student Chapter won the “Outstanding Student Chapter” Award for the fifth time! The award was started in 2002 so they have won it 5 of the nine years it has been in existence!



**Northwest  
Geophysical  
Associates, Inc.**

### Geophysical Investigations

- Geotechnical
- Environmental
- Groundwater



Now in Beaverton, Oregon  
(503) 992-6723 [www.nga.com](http://www.nga.com)



Engineering +  
Environmental



Geo-Environmental



Environmental Engineering



Health & Safety



Civil Engineering



Natural Resources



Geotechnical Engineering

4412 SW Corbett Avenue, Portland, Oregon 97239  
503.248.1939 [www.pbsenv.com](http://www.pbsenv.com)

## Thanks For Supporting AEG

Ash Creek Associates

AMEC Earth and Environmental, Inc.

Columbia Geotechnical

Cornforth Consultants

Geocon NW

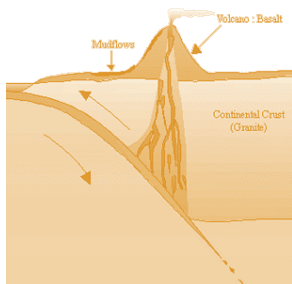
Kuper Consulting

Oregon Department of Geology and  
Mineral Industries

Parametrix

PBS Engineering + Environmental

Portland State University



## Section Officers & Committee Chairs



Chair :  
Kevin Schleh  
Geocon NW  
Kevin@GeoConNW.com



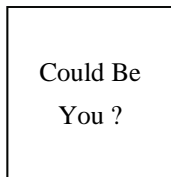
Program Co-Chair:  
Michael Marshall  
Parametrix  
mmarshall@parametrix.com



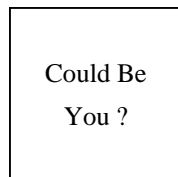
Legislature Chair:  
Adam Reese  
Ash Creek Associates  
AREese@ashcreekassociates.com



Chair Elect:  
Robin Johnston  
Amec Earth & Environmental  
Robin.johnston@amec.com



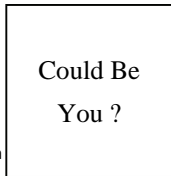
Program Co-Chair:  
Vacant



Continuing Education Liaison:  
Vacant



Treasurer:  
Darren Beckstrand  
Cornforth Consultants  
dbeckstrand@cornforthconsultants.com



Field-Trip Chair:  
Vacant



Newsletter Editor:  
Scott Braunsten  
PBS Engineering + Environmental  
scott.braunsten@pbsenv.com



Secretary:  
Linda Mark  
Vigil-Agrimis  
lmark@vigil-agrimis.com



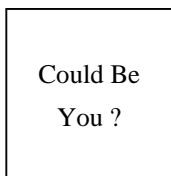
Membership Chair:  
Ruth Wilmoth  
Columbia Geotechnical, Inc.  
ruthwilmoth@comcast.net



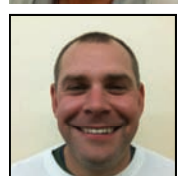
Webpage Editor:  
Keith Olson  
kvo@pdx.edu



Past Chair:  
Lisa Glonek  
lglonek@hotmail.com



History Chair:  
Vacant



PSU Student Chapter President:  
Tom Denney  
potsie181@yahoo.com

The Oregon Section is also on the web at <http://www.aegoregon.org>  
National AEG webpage: <http://aegweb.org>

## The Oregon Section Newsletter

OREGON SECTION AEG NEWSLETTER is published monthly from September through May. Subscriptions are for members of AEG affiliated with the Oregon Section or other Sections, and other interested people who have requested and paid a local subscription fee of \$10.00. E-mail subscriptions are free. News items are invited and should be sent to: Scott Braunsten, OR Section AEG Newsletter Editor, PBS Engineering + Environmental, 4412 SW Corbett Avenue, Portland, OR 97239, e-mail: [scott.braunsten@pbsenv.com](mailto:scott.braunsten@pbsenv.com), phone (503) 417-7737. Electronic media is preferred. Deadline for submittal is the 20th of the month. Advertising: business card \$100/yr; ¼ page \$200/yr; ½ page \$350/yr. Please notify Scott if you have a change to your email or mailing address.

The Association of Engineering Geologists (AEG) contributes to its members' professional success and the public welfare by providing leadership, advocacy, and applied research in environmental and engineering geology. AEG's values are based on the belief that its members have a responsibility to assume stewardship over their fields of expertise. AEG is the acknowledged international leader in environmental and engineering geology, and is greatly respected for its stewardship of the profession.

